

Staying Connected on the Road

TV & Streaming for Motorhomes

Presented by Digital RV

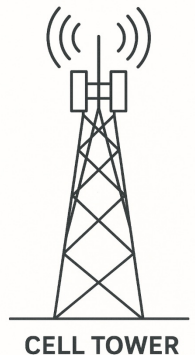
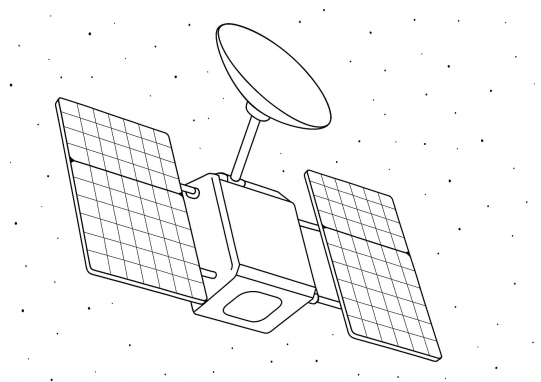


Introduction

- Why connectivity matters in a motorhome
- What we'll cover:

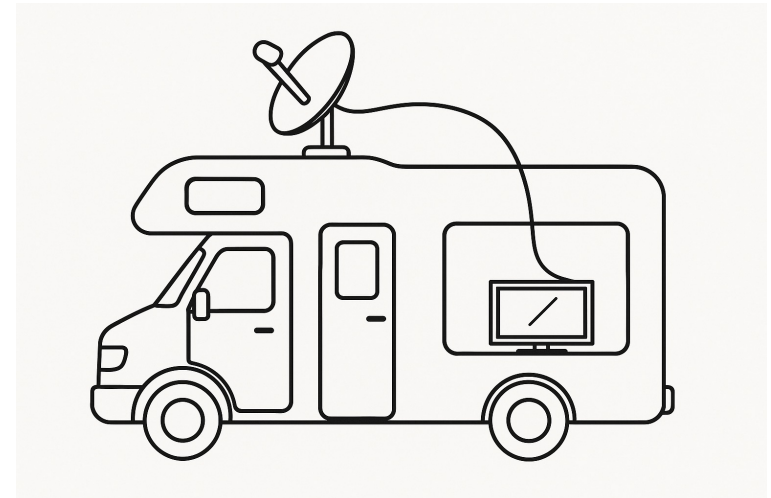
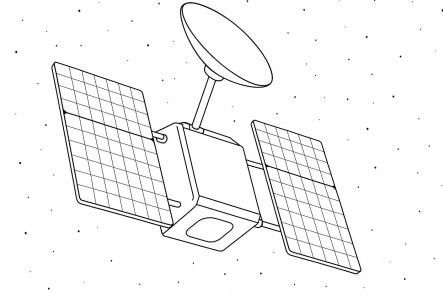
Satellite TV, Streaming TV, Internet & WIFI, Starlink , 4G

- Goal: Help you stay connected and entertained wherever you travel



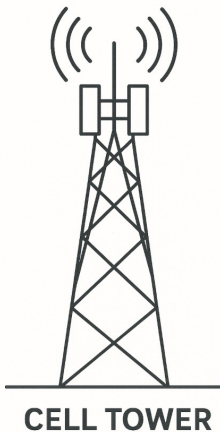
Satellite TV – How It Works & Features

- Uses a satellite dish to receive signals
- Receives signals from Geo Stationary Satellites.
- Requires clear line-of-sight to the satellite
- No on going charges
- Limited to Freeview Channels, and Sky (Subscription required)
- 100% Coverage in NZ.
- No Data Connection Needed



Streaming TV—How It Works & Features

- Internet-based services: Netflix, TVNZ+, YouTube etc
- Needs smart TV or streaming device.
- Needs the ability to update software of devices.
- Requires stable internet connection.
- Your content is delivered from the internet
- High data usage (1–3 GB/hour in HD)



NETFLIX

 **YouTube**

 **prime video**

tvnz+

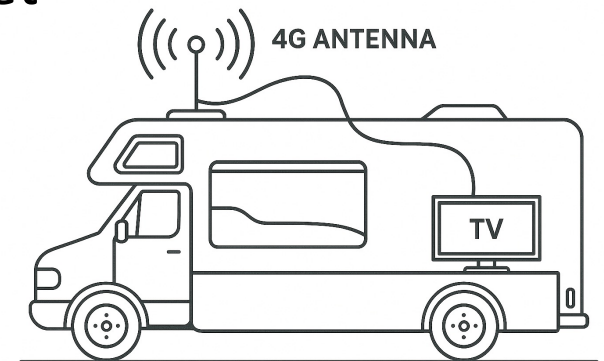
 **more now**

 **sky SPORT NOW**

 **prime video**



 **NETFLIX**



 **DIGITAL RV**
digital products & services for the mobile market

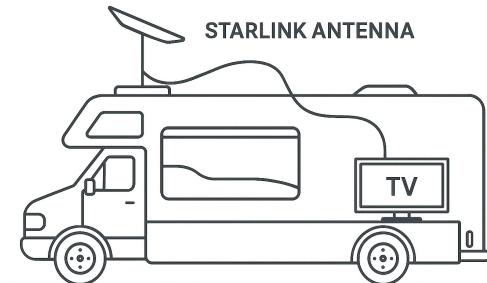
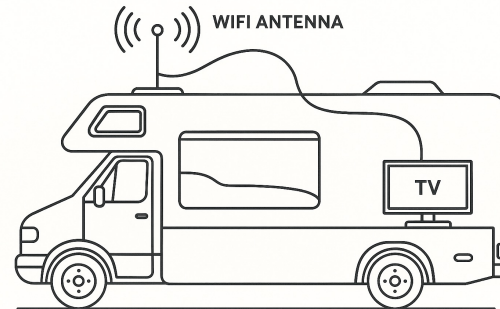
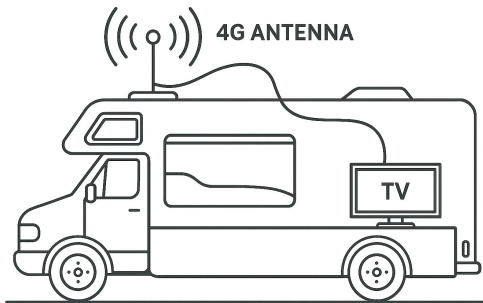
Streaming TV – Pros and Cons

- Pros:
- Huge content variety
- On-demand access
- Cons:
- Internet required
- High data usage (1–3GB/hour in HD)
- Cost of Internet
- Hardware always changing



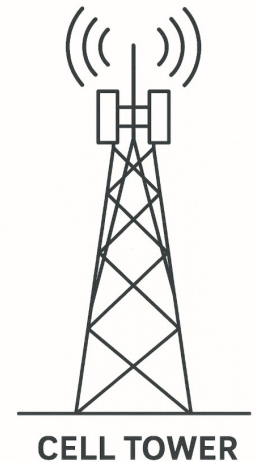
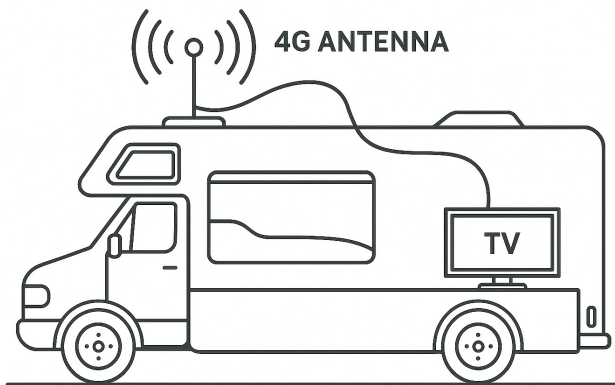
Internet Options for Motorhomes

- 4G/5G Routers – Mobile broadband with SIM Card
- Starlink – Satellite internet with wide coverage
- Public WiFi – Often slow, limited availability
- Hot Spot from Cell Phone



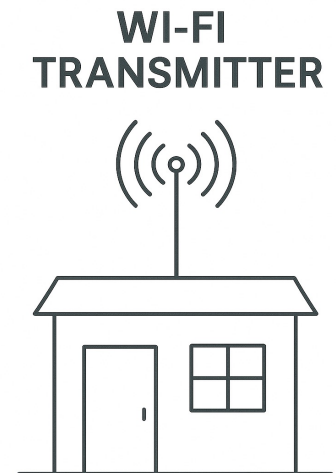
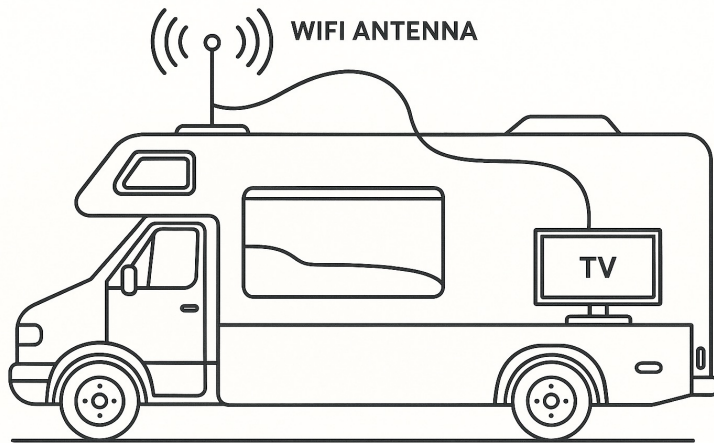
4G / 5G Cell Reception

- Use an onboard modem to receive Internet from 4G/5G Cell towers.
- Re distribute the internet using WiFi inside Motor Home
- Needs external antenna for better signal reception in poor signal areas, and if there is a lot of metal surrounding your RV
- Hot Spot from Cell phone works the same way.



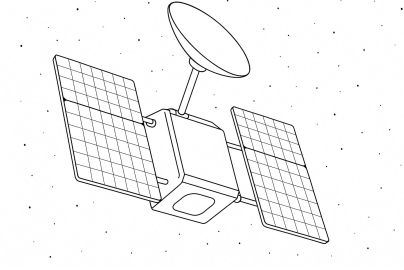
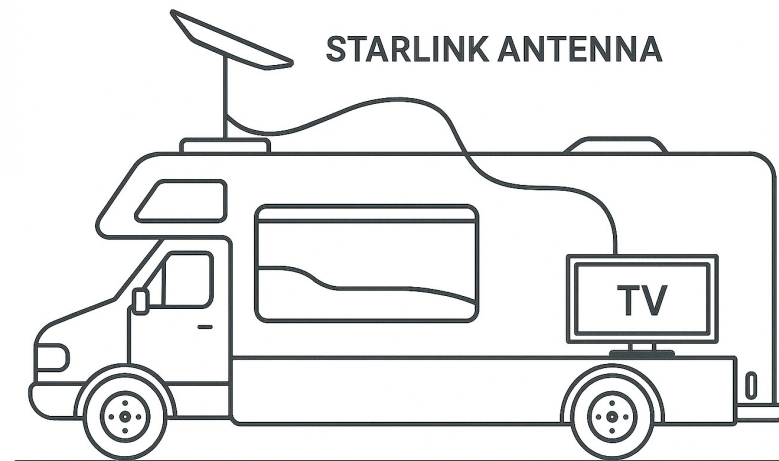
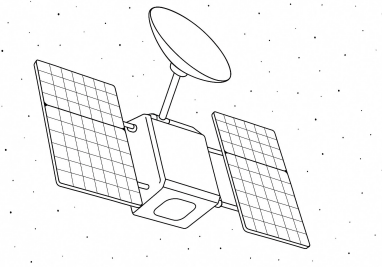
Wifi – Public or Camping Ground

- Internet is provided by Camping ground
- Limited Range
- May need external antenna for better signal if there is a lot of metal surrounding your RV
- May have charges or login access / portals



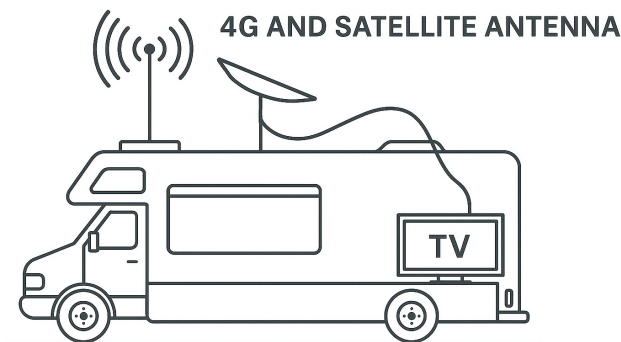
Starlink Satellite Internet

- Internet comes from low orbit satellites
- Coverage everywhere in NZ
- External mounted antenna or portable mini antenna
- Higher costs = Faster Speeds

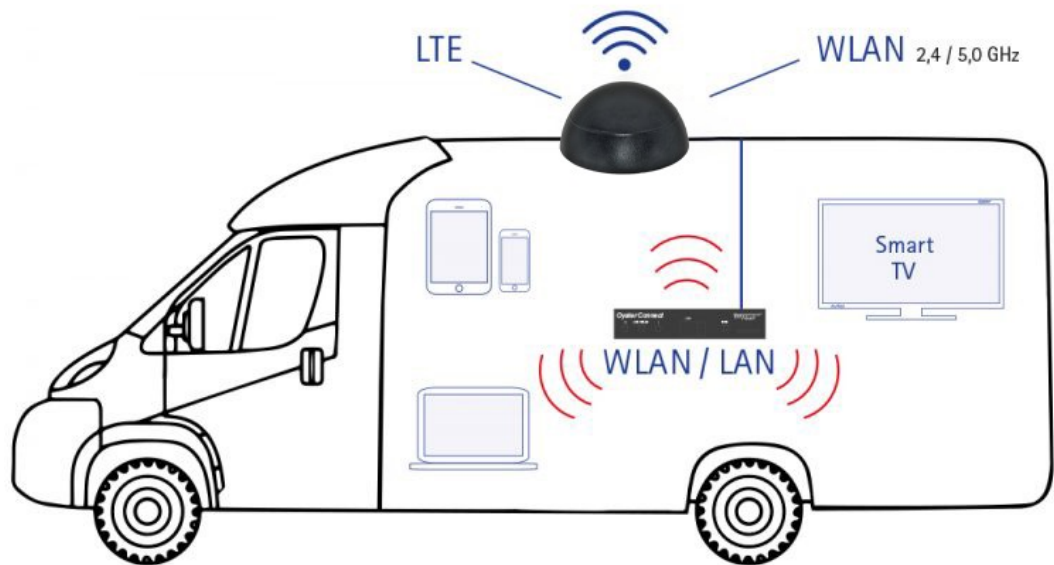
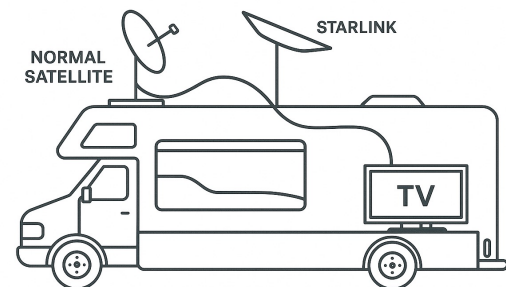


TV + Internet Combinations

- **Satellite Smart TV + 4G Router = Best of both worlds**
- Streaming TV + Starlink = High data, full flexibility
- Hybrid systems are ideal for NZ conditions



NORMAL AND STARLINK ANTENNA



Recommended Hardware

- Satellite Dishes: Manual or Auto-locating
- Streaming Devices: Fire Stick, Android TV , Apple TV
- Routers: 4G-capable with external antenna support
Wireless Nation, Spark , ONE NZ , 2 Degrees
- Starlink: Great for high-speed mobile internet
- Smart TV with streaming software and Satellite Tuner
- Dedicated Wifi / 4G hybrid RV systems. (Oyster Connect)



Who can help?

**We can @
Digital RV**

We live and breathe technology.



www.digitalrv.co.nz

43 Canada Cres

Hornby South

Christchurch

Phone 03 344 5418